



VILLAGE OF MOUNT HOREB

E. Main Street

Mount Horeb, WI 53572

Phone: (608) 437-6884 Fax: (608) 437-3190

Email: [mhinfo@mounthorebwi.info](mailto:mhinfo@mounthorebwi.info) Web: [mounthorebwi.info](http://mounthorebwi.info)

**SUSTAINABILITY & NATURAL RESOURCES COMMITTEE**

**Tuesday, September 23, 2025 at 7:00 PM**

Municipal Building Board Room

138 E. Main Street

Mount Horeb, WI

- 1) Call to order
- 2) Public Comments
- 3) Consent Agenda
  - a. Consideration of August 26, 2025 Meeting Minutes
  - b. Green Team Update
  - c. Adopt a Municipality Reports
- 4) Agenda Items
  - a. Green Team Report
  - b. Bike City Designation
  - c. Proclamation Requesting Consideration of Sustainability Features including Planting Native Plants at new Park at Lukken Farm
  - d. Discussion on 2026 Budget Request
  - e. Update on Sustainability Plan
  - f. Update on Slipstream Public Engagement Forum
- 5) Future Agenda Items
- 6) Meeting adjournment.

UPON REASONABLE NOTICE, EFFORTS WILL BE MADE TO ACCOMMODATE THE NEEDS OF DISABLED INDIVIDUALS THROUGH APPROPRIATE AIDS AND SERVICES. FOR INFORMATION OR TO REQUEST THIS SERVICE, CONTACT ALYSSA GAFFNEY, CLERK, AT 138 E MAIN STREET, MOUNT HOREB, WI (608) 437-9404.



## VILLAGE OF MOUNT HOREB

E. Main Street

Mount Horeb, WI 53572

Phone: (608) 437-6884 Fax: (608) 437-3190

Email: [mhinfo@mounthorebwi.info](mailto:mhinfo@mounthorebwi.info) Web: [mounthorebwi.info](http://mounthorebwi.info)

### **SUSTAINABILITY & NATURAL RESOURCES COMMITTEE**

**Tuesday, August 26, 2025 at 7:00 PM**

#### **DRAFT MEETING MINUTES**

- 1) Call to order  
Acting Chair Best called the meeting to order at 7:00. Members present: Best, Grabe, Beheler, Saltes, Roethle. Absent: White.
- 2) Public Comments  
Eileen Young, 108 S Fourth St, spoke in favor of considering solar for the parking lot at the park at the Lukken Farm and asked about getting the ragweed along the Bike Trail Cut. Young was informed the DNR is responsible for maintenance of the trail.
- 3) Consent Agenda  
Motion by Saltes, second by Roethle. Motion carried.
  - a. Consideration of July 22, 2025 Meeting Minutes
  - b. Adopt a Municipality Reports
- 4) Agenda Items
  - a. Presentation by Slipstream: Findings of Building Energy Audits and Recommendations  
Dan Streit and Kevin Frost of Slipstream shared the findings of their energy audits of the Public Safety Building, Library and Municipal Building. They included recommendations for improving efficiencies, with the municipal building being the biggest potential for savings. They also discussed the options for a public presentation for community engagement on the topic. After the community engagement event, they will finalize the energy plan.
  - b. Green Team Report  
Grabe provided the highlights of the Green Team activities.
  - c. Bike City Designation  
Roethle reviewed progress with the application, noting he created a Google document. Administrator Owen will help fill out items and answers needed from the Village.

- d. Recommendation on Coalition for More Responsible Transportation Membership  
The committee reviewed information on the free membership and determined it was worthwhile, especially in pursuing the bike-friendly status. Motion by Beheler, second by Grabe to recommend approval. Motion carried.
  - e. Resolution Requesting Consideration of Sustainability Features including Planting Native Plants at new Park at Lukken Farm  
The committee discussed the desire for sustainability features at the new park at the Lukken farm, including at least 50% of the plantings being native plants for native pollinators and animals and stabilizing steep slopes, planting of oak trees, bio retention areas, potentially solar panels in the parking lot and strategically placed permeable pavement. The Committee will review a draft resolution at the next meeting.
  - f. Discussion on 2026 Budget Request  
The committee would like to see more information on the Sustainable Business Council to determine the benefit to the Committee.
  - g. Discussion on Sustainable Procurement  
Grabe reported she watched the webinar and said that it was extremely detailed and complicated and that it probably works for Middleton because they have two staff members devoted to sustainability. The consensus of the committee was that some of the information may be helpful to right size a plan for Mount Horeb.
  - h. Update on Sustainability Plan  
Saltes reported that the Nelson Institute Students are just coming back to school and will need time to pick projects. He also pointed out the UW's UniverCity Alliance Program, which may be an option for development of the Sustainability Plan.
- 5) Future Agenda Items  
Update on Slipstream Public Engagement Forum, Green Team Report, Bike Friendly City Designation Update, Lukken Farm Resolution, 2026 Budget Request, Future presentation on Lake Street Stormwater Basin.
- 6) Meeting adjournment.  
Motion by Beheler to adjourn, second by Grabe. Motion carried. 8:47 p.m.



## AGENDA ITEM REPORT

### MEETING DATE

September 23, 2025

### PREPARED BY

### AGENDA ITEM # 3.b

Green Team Update

### BACKGROUND

[9/2/25 Green Team Meeting Notes](#)

### RECOMMENDATION

### ATTACHMENTS

None



## Bicycle Friendly Communities

The League of American Bicyclists' Bicycle Friendly Community Program ranks communities across the United States as Platinum, Gold, Silver, Bronze and honorable mention.

The **Bicycle Friendly Community program** provides incentives, hands-on assistance and award recognition for communities that actively support bicycling through a combination of infrastructure, programs and policies. There are currently **22** Wisconsin Bicycle Friendly Communities in the **League of American Bicyclists Award Database** (select WI from the map and scroll for lists):

- **Platinum:** Madison
- **Silver:** Appleton, Fitchburg, La Crosse, Milwaukee, Shorewood, Stevens Point, Sun Prairie
- **Bronze:** Eau Claire, Green Bay, Janesville, Kenosha County, Menasha, Menomonie, Monona, Onalaska, River Falls, Sheboygan, Sheboygan County, Sturgeon Bay, Verona, West Allis



People on bicycles are an indicator species for vibrant, economically healthy communities where people want to live, work, do business and visit. Investments in bicycling yield tremendously high returns at a very small cost. Bicycling is such a cost-effective, simple solution for so many of today's complicated problems, it's no wonder communities across the state are working to make themselves more bicycle friendly.

### Get started in applying for a Bicycle Friendly Community Award!

- Begin by downloading and reading the **Bicycle Friendly Community Overview**.
- Take a few minutes to evaluate your community with this quick **Bicycle Friendly Community Scorecard**.
- Visit the League's **Application Portal**. The online application and process will require some research into demographics and infrastructure to complete.
- Plan your strategy for pitching bicycle-friendly improvements.
- Gather support.
- Call your government official and request a meeting.
- Ask for something specific and try to get a specific commitment. A good starting point is to ask if the person will submit the application for Bicycle Friendly Community status.
- Follow up and follow up (and follow up).
- Consider hiring the Bike Fed to create and submit your application – We have a proven track record of procuring designations including Madison's Platinum Status.

### The Five E's of the League of American Bicyclists Ranking Assessment:

- **ENGINEERING** – Bike lanes, bike routes, trails, bike parking, etc.
- **EDUCATION** – Availability of cycling education, safety materials, Safe Routes to School programs and number of League cycling instructors
- **ENCOURAGEMENT** – Bike to Work Week events, Bike Challenge participation, printed materials such as maps and brochures, fun events like Tour de Fat, etc.
- **EVALUATION and PLANNING** – Community Bike Plan, annual bike counts, evaluation of crash data, mode share, etc.
- **EQUITY** – while not an official "E", equity is an important consideration, and is the recognition that recognize that youth, women and people of color are underrepresented in many bike advocacy efforts and local transportation decisions.

### Funding and Technical Assistance Grant Opportunities courtesy of League of American Bicyclists as of February 2025:

- AARP Community Challenge Grant
  - <https://www.aarp.org/livable-communities/community-challenge/>
  - Their microgrant category includes a Bike Audit microgrant that includes funding and technical assistance from the League of American Bicyclists!
- USDOT Grant links:
  - Key Notices of Funding Opportunities: <https://www.transportation.gov/bipartisan-infrastructure-law/key-notices-funding-opportunity>
  - Discretionary Grants dashboard: <https://www.transportation.gov/grants/dashboard>
- U.S. Conference of Mayors Grant Application Bootcamp:
  - <https://localinfrastructure.org/application-bootcamp/>
- Federal Funding Resources from the League:
  - <https://bikeleague.org/federal-funding-resources/>
  - <https://data.bikeleague.org/in-this-report/federal-transportation-funding/>

### Keep Wisconsin Biking Strong!

Wisconsin Bike Fed's advocacy work to help residents and communities is made possible thanks to our supporters. Please consider making a gift or joining as an organizational member today!

[DONATE](#)

### RELATED CONTENT

MAY 14, 2025

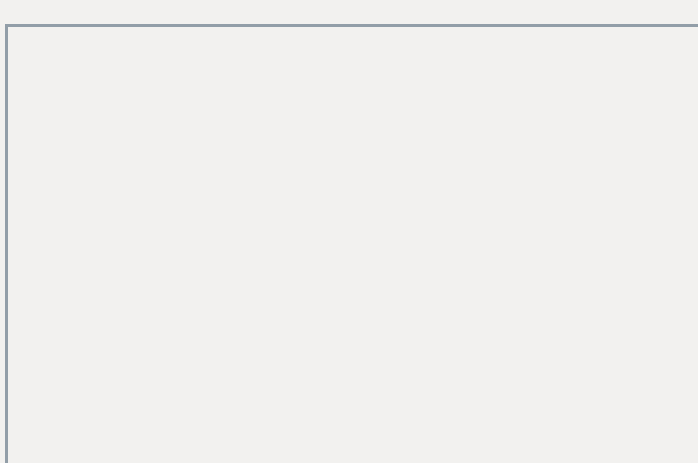


ADVOCACY

#### Wisconsin River Recreational Bridge

May 8 2025 Celebration of Progress

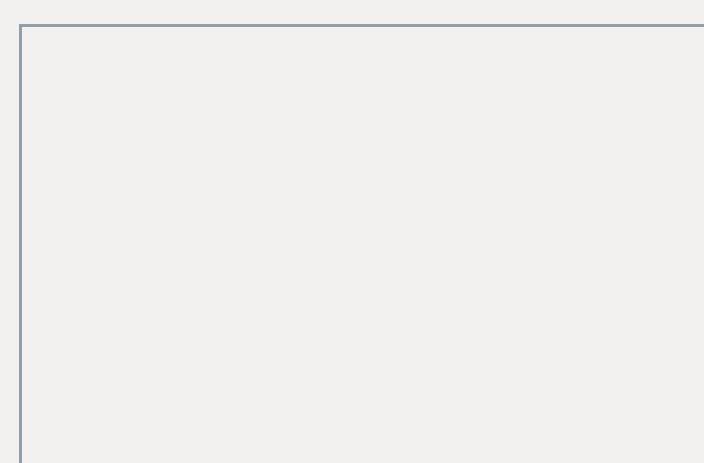
MAY 1, 2025



#### Things are Moving so Fast

... And Not All of it is Great

APRIL 24, 2025



#### What Do you Do with Unimaginable Grief?

In partnership with Madison Bikes and Machinery Row, Alicia Bosscher and Dirk...

## We're building a better, more bike-friendly Wisconsin.

The Bike Fed is here to cultivate, motivate and unite a strong community of residents as well as business and political leaders to move bicycling forward in Wisconsin – through education, legislation and involvement.

[SUPPORT US!](#)



### Our Locations

187 E Becher Street - Suite B  
Milwaukee, WI 53207-1245

612 W Main St - Suite 200  
Madison, WI 53703-4714

Office Hours Vary. Visits by Appointment.

[CONTACT US](#)

### Stay Connected! Be Counted!

Subscribe to receive the latest info on Wisconsin bicycling with our weekly E-Newsletter (Saturday mornings) and occasional Action Alerts AND be counted as one of our supporters!

"\*" indicates required fields

First Name Last Name

Email Zip Code

City County

[SUBMIT](#)



### Learn More About Us

- [About the Wisconsin Bike Fed](#)
- [Board of Directors](#)
- [Staff](#)
- [Careers](#)
- [Media Kit PDF](#)





## AGENDA ITEM REPORT

### MEETING DATE

September 23, 2025

### PREPARED BY

Nicholas Owen, Administrator

### AGENDA ITEM # 4.c

Proclamation Requesting Consideration of Sustainability Features including Planting Native Plants at new Park at Lukken Farm

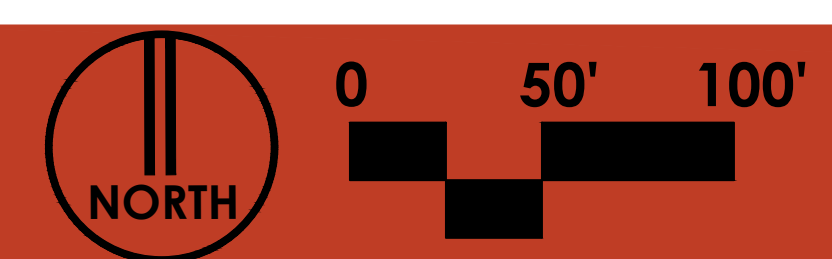
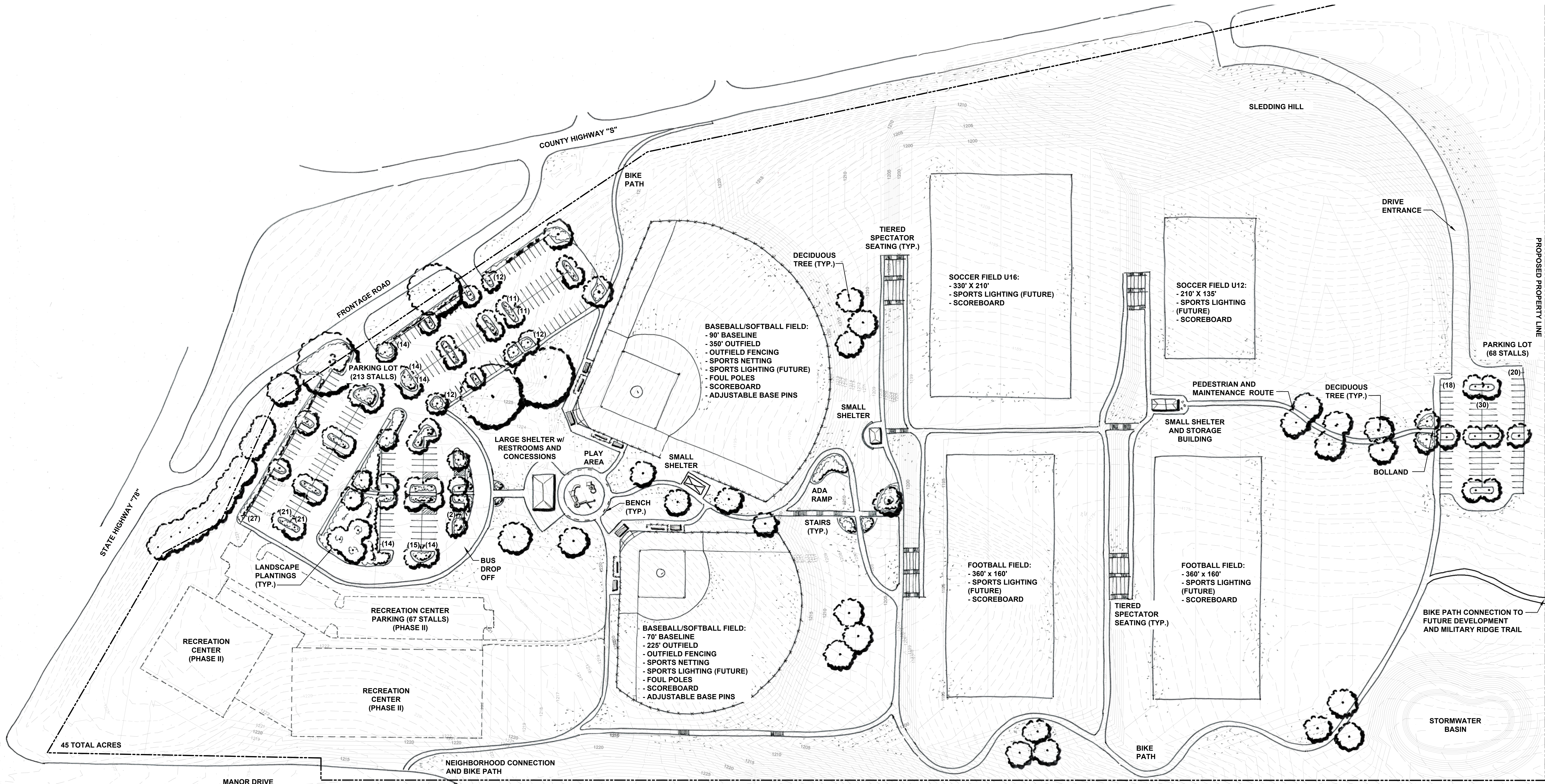
### BACKGROUND

The Parks, Recreation and Forestry Commission will be making a recommendation on which concept plan the Village Board should approve and move forward with fundraising efforts and development. A committee member requested this item be added to provide input to the Village Board on incorporating sustainable items into the parks design. The attached proclamation requests consideration of sustainability features at the park. The Committee can revise at tonight's meeting as they see fit.

### RECOMMENDATION

### ATTACHMENTS

1. Presented Concept A
2. Presented Concept B
3. Bioretention
4. Lukken Farm Park Sustainability Proclamation



CONCEPT A





**Theresa Nelson**

8:17 AM

To: Jack & 2 more... >



Hi Jack – I’m glad you got to experience our monarch haven! This type of stormwater facility is called a bioretention basin. It’s distinguishing characteristic is that it has a layer of “engineered soil” (sand & compost) that the plants are planted in – this helps to trap sediment while still maintaining infiltration. Bioretention basins are also required to be planted in native vegetation. The big winner for the monarchs in this basin is the meadow blazing star – one of their absolute favorites!

All the parking lot drains to this basin. The beds at the southern end are just planted in natives that like shade. We’re still working on getting those filled in – the animals like to eat the plants :\

Hope you’re having a great summer!



**Theresa M. Nelson, P.E.**

**Water Resource Engineer, Water Resource Engineering Division**

5201 Fen Oak Drive #208, Madison, WI 53718

Cell: (608) 577-4879 | [website](#) |

pronouns: she/her/hers





---

**A PROCLAMATION IN SUPPORT OF SUSTAINABILITY EFFORTS AT PARK  
AT LUKKEN FARM**

WHERE AS, the Village of Mount Horeb Sustainability and Natural Resources Committee (SNR) has embraced a mission which addresses the following;

To collaborate with our Village residents to create and expand sustainability practices which are inclusive, safe, and resilient, and improve quality of life for current and future generations who call Mount Horeb home; to advocate and promote sustainable Village policies and practices, and seek innovative solutions while recognizing the interdependence of environmental quality, economic resiliency and growth, and social equity, and;

WHERE AS, the Village of Mount Horeb has Purchased the Lukken Farm and developed a concept plan for the development of a new park, and;

WHERE AS, the SNR Committee has reviewed the Concept Plan and has the following recommendations to include sustainable practices and protect the unique natural resources of Mount Horeb;

NOW, THEREFORE, BE IT PROCLAIMED that the Village of Mount Horeb Sustainability and Natural Resources Committee recommends that greater than 50% of the plantings at the park at the Lukken farm be native plants, shrubs and trees; and

BE IT FURTHER PROCLAIMED, the SNR Committee encourages the planning of prairie areas in unused areas instead of grass that requires traditional mowing and maintenance, and;

BE IT FURTHER PROCLAIMED, that the SNR Committee recommends the inclusion of bioretention basins to help control stormwater in the parking lots, and;

BE IT FURTHER PROCLAIMED, that the SNR Committee recommends pervious pavements where appropriate and other environmentally designed features.

DATED this 23rd day of September, 2025.

---

Tim White, Sustainability and Natural Resources Chair



## AGENDA ITEM REPORT

### MEETING DATE

September 23, 2025

### PREPARED BY

Nicholas Owen, Administrator

### AGENDA ITEM # 4.d

Discussion on 2026 Budget Request

### BACKGROUND

Continued discussion on the 2026 budget request by the SNR committee. One potential item would be membership in the [Sustainable Business Council](#). I'm including the membership brochure as an attachment to the packet as well.

### RECOMMENDATION

### ATTACHMENTS

1. WSBC Membership Book 2025

**Educate.  
Measure.  
Improve.  
Connect.  
Membership.**



**SUSTAINABLE BUSINESS  
COUNCIL MEMBER**

Educate. Measure. Improve. Connect.

**Our mission is to advance the integration of sustainable principles and practices in business.**

**Join Today!**

Membership is your gateway to connecting with expert knowledge, impactful programs, and valuable services. By joining, you gain access to resources that support the integration of your sustainability goals and amplify your impact.





A WSBC membership helps businesses, organizations, and individuals:

**Educate. Measure. Improve. Connect.**



### **Business Membership Strengthen Your Sustainability Strategy**

Your Business Membership connects you to a community of local businesses and sustainability leaders who are driving impactful solutions. As a member, you gain access to benchmarking tools, resources, and strategies to measure and enhance sustainability performance within your organization. Additionally, membership elevates your company's profile as a contributor to a resilient, sustainable future.

### **Affiliate Membership Join a Community of Sustainability Advocates**

Affiliate Membership empowers nonprofits, governmental, and higher education entities to collaborate with Wisconsin's sustainable businesses. Affiliates can co-host events, cross-promote initiatives, and partner on sustainability programs. Membership also offers networking, skills development, and opportunities to promote aligned work, contributing to a stronger, sustainable future..

### **Individual Membership Elevate Your Sustainability Career**

Individual Membership helps boost your marketability as a sustainability professional by providing access to networking, collaboration with industry leaders, and education tailored to developing your skills and credentials. Stay ahead of sustainability trends and discover new employment opportunities within Wisconsin's leading sustainability-focused businesses.



**Join and become part of the movement towards a resilient and sustainable future.**

Please contact Jessy Servi Ortiz at [jessy@wisconsinsustainability.com](mailto:jessy@wisconsinsustainability.com) to sign up today.

Visit our website for additional information: [WisconsinSustainability.com](http://WisconsinSustainability.com)

Jessy Servi Ortiz  
Executive Director of the WSBC



## Benefits of being a member:



### CONNECT

Connect, network, and collaborate with other sustainability-focused members, including participants in the Green Masters Program®.

Gain direct access to industry sustainability experts for questions and shared learning.

Access a searchable online member directory complete with business profiles.

Enjoy exclusive discounted rates on special events and the annual conference.

Engage with committees or working groups to exchange ideas, leverage best practices, and advance sustainability.

Take on leadership roles within committees or working groups to gain growth and leadership experience.

### EDUCATE

Enjoy free access to member webinars, educational seminars, and roundtables.

Participate in peer learning through meetings and events that foster idea exchange and innovation.

Access the exclusive WSBC member portal with a directory, job board, and a sustainability resource library, including webinar recordings, virtual conference sessions, and courses tailored to advancing sustainability in businesses.

Take on leadership roles within committees or working groups to gain growth and leadership experience.

### MEASURE & IMPROVE

Participate in the Green Masters Program at no additional cost, helping you identify and prioritize key sustainability areas material to your organization.

Meet customer demand by focusing on sustainability practices that add business value and resonate with stakeholders.

Identify inefficiencies, reduce waste, cut costs, and enhance both financial and environmental performance.

Gain recognition for your sustainability achievements by using the Green Masters Program® logo in your branding, showcasing your commitment to continuous improvement.

Access industry-specific insights and recommendations through strategic guidance to help navigate the evolving landscape of sustainable business practices.



### SHOWCASE

Feature your business logo and sustainability commitment on the WSBC website under current members.

Use WSBC member logos, badges, and window decals to highlight your support for sustainability advancement.

Promote company news, events, or job listings through our channels and gain special marketing opportunities.

Share your sustainability success by speaking at events or co-creating case studies.

Display the exclusive Member-only logo and showcase your support for the Business as a Force for Good movement.



# Membership Investment

Company membership level based on company employee count.

COMPANY SIZE	VALUE
1-25 Employees (1 Member user ID)	\$500
26-150 Employees (2 Member user IDs)	\$750
151 - 500 Employees (3 Member user IDs)	\$1,250
501 - 5,000 Employees (4 Member user IDs)	\$1,750
5,000 + Employees (5 Member user IDs)	\$2,500

\*Fee for additional member IDs to be determined based on cost.

## INDIVIDUAL MEMBERSHIP INVESTMENTS

Professional	\$250
Student / Retiree	\$55



# Member Sponsor Opportunities

## PROGRAM SPONSOR

Sponsor the advancement of WSBC programs like the Green Masters Program and 21st Century Pathways. Your sponsorship helps improve these programs. If needed a version specific to the needs of your company may be built.

## EVENT SPONSORSHIP

Sponsor specific regional events focused on a sustainability topic. Perhaps a Peer to Peer meeting or an educational event? This can include hosting, promotion, food or beverage donation, etc..

## CONFERENCE SPONSORSHIP

Showcase your commitment to sustainability by supporting our annual B2B conference.

## AWARDS SPONSOR

Sponsor innovation and the advancement of best practices in the field of sustainability by partnering to support the annual WSBC awards program. This can include hosting, promotion, food or beverage donation, etc..

Please contact Jessy Servi Ortiz at [jessy@wisconsinsustainability.com](mailto:jessy@wisconsinsustainability.com) to sign up today.

Visit our website for additional information: [WisconsinSustainability.com](http://WisconsinSustainability.com)





## AGENDA ITEM REPORT

### MEETING DATE

September 23, 2025

### PREPARED BY

Nicholas Owen, Administrator

### AGENDA ITEM # 4.e

Update on Sustainability Plan

### BACKGROUND

[UniversCity Alliance](#)

### RECOMMENDATION

### ATTACHMENTS

None



## AGENDA ITEM REPORT

### MEETING DATE

September 23, 2025

### PREPARED BY

Nicholas Owen, Administrator

### AGENDA ITEM # 4.f

Update on Slipstream Public Engagement Forum

### BACKGROUND

*The Village of Mount Horeb is creating a plan to reduce energy use in municipal operations and to also support community members in saving energy at home and at work. The project team has prepared preliminary recommendations for energy saving strategies to be included in the plan.*

*Thank you for responding to the community survey that was conducted as part of the energy planning project! The information that community members like you provided informed the recommendations that the project team is developing. **Please come to a forum at 6:00 on Tuesday, September 30<sup>th</sup>** at the Mount Horeb Community Center to learn about the preliminary recommendations for the energy plan and to provide your feedback. See you there! Please contact Village Administrator Nic Owen, [nic.owen@mounthorebwi.info](mailto:nic.owen@mounthorebwi.info), 608-437-9409 for more information.*

Dan Streit is also looking for some volunteers that are willing to staff display boards at the event and answer questions from the audience at the event. Dan will provide training prior.

### RECOMMENDATION

### ATTACHMENTS

None